

YPÄJÄ 2024

MARATHON INFO
National Class 2; 6; 8

(03.08.2024)

Course Designer – Kristaps Caune (LAT)





YPÄJÄ 2024

Marathon Section Times

National Class 8
(03.08.2024)

Horses

Section	Distance	Speed	Minimum Time	Time Allowed	Maximum Time	Compulsory Turning Flags
In Harness Inspection						
Section A	3140 m	11 km/h	15 min 08 sec	17 min 08 sec	20 min 34 sec	1 - 2
Neutral Zone	3 min					
Rest	10 min					
Warm Up Obstacle	max. 2 min					
Section B O1; O2; O4; O5; O7	4760 m	11.5 km/h	21 min 51 sec	24 min 51 sec	49 min 42 sec	1 - 9
Cool Down In Harness Examination	Track		10 min		15 min	



YPÄJÄ 2024

Marathon Section Times

National Class 6
(03.08.2024)

Ponies

Section	Distance	Speed	Minimum Time	Time Allowed	Maximum Time	Compulsory Turning Flags
In Harness Inspection						
Section A	3140 m	10 km/h	16 min 51 sec	18 min 51 sec	22 min 37 sec	1 - 2
Neutral Zone	3 min					
Rest	10 min					
Warm Up Obstacle	max. 2 min					
Section B O1; O2; O4; O5; O7	4760 m	10.5 km/h	24 min 12 sec	27 min 12 sec	54 min 24 sec	1 - 9
Cool Down In Harness Examination	Track		10 min		15 min	



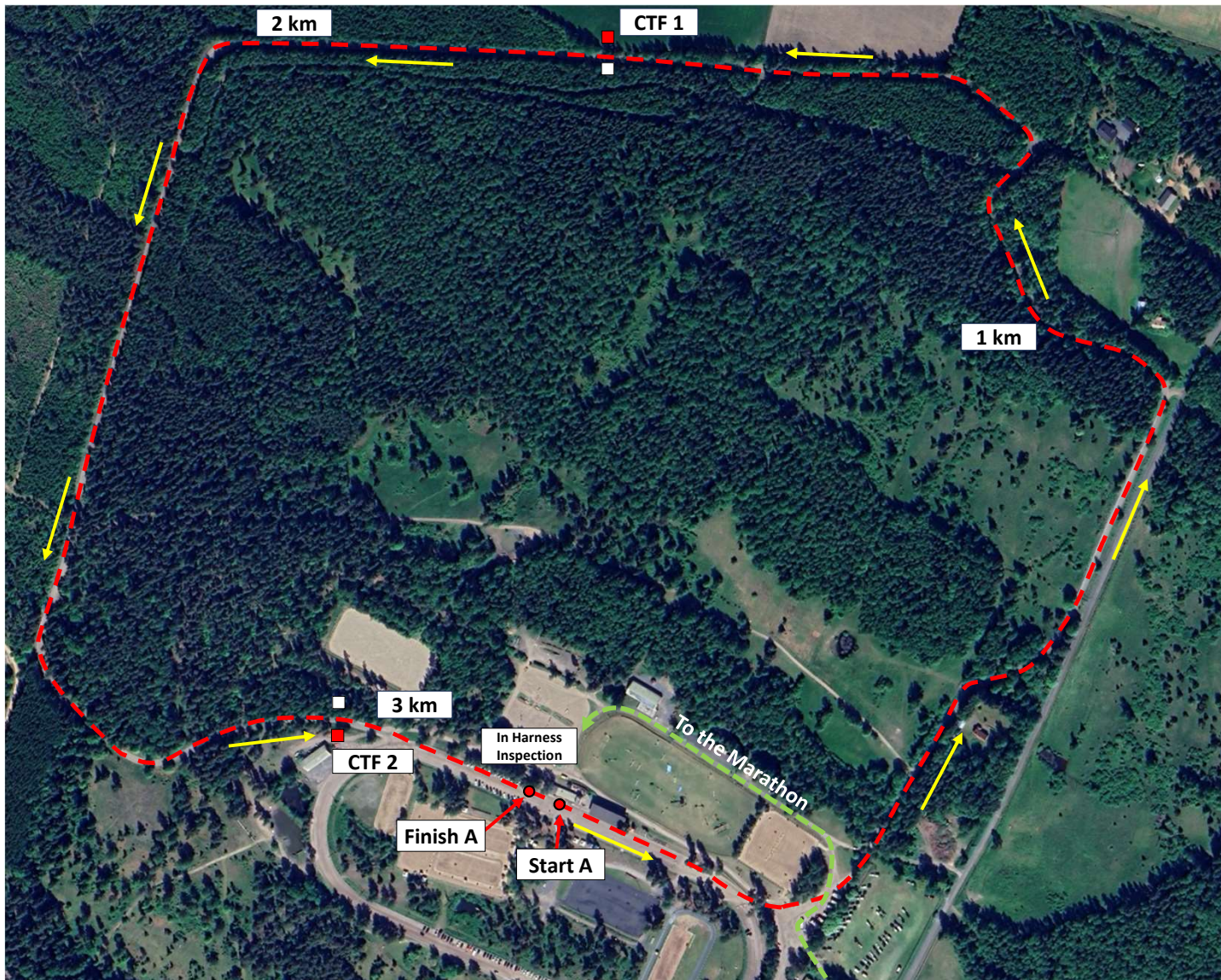
YPÄJÄ 2024

Marathon Section Times

National Class 2
(03.08.2024)

Ponies

Section	Distance	Speed	Minimum Time	Time Allowed	Maximum Time	Compulsory Turning Flags
In Harness Inspection						
Controlled Warm Up	Area		18 min	20 min	24 min	
Neutral Zone	2 min					
Rest	5 min					
Warm Up Obstacle	max. 2 min					
Section B O1; O2; O4; O5; O7	4760 m	9.5 km/h	27 min 04 sec	30 min 04 sec	60 min 08 sec	1 - 9
Cool Down In Harness Examination	Track		10 min		15 min	



YPÄJÄ 2024

National Class 6; 8

Section A

3140 m

Start A	CTF 2
1 km	3 km
CTF 1	Finish A
2 km	3140 m

CD KRISTAPS CAUNE



YPÄJÄ 2024

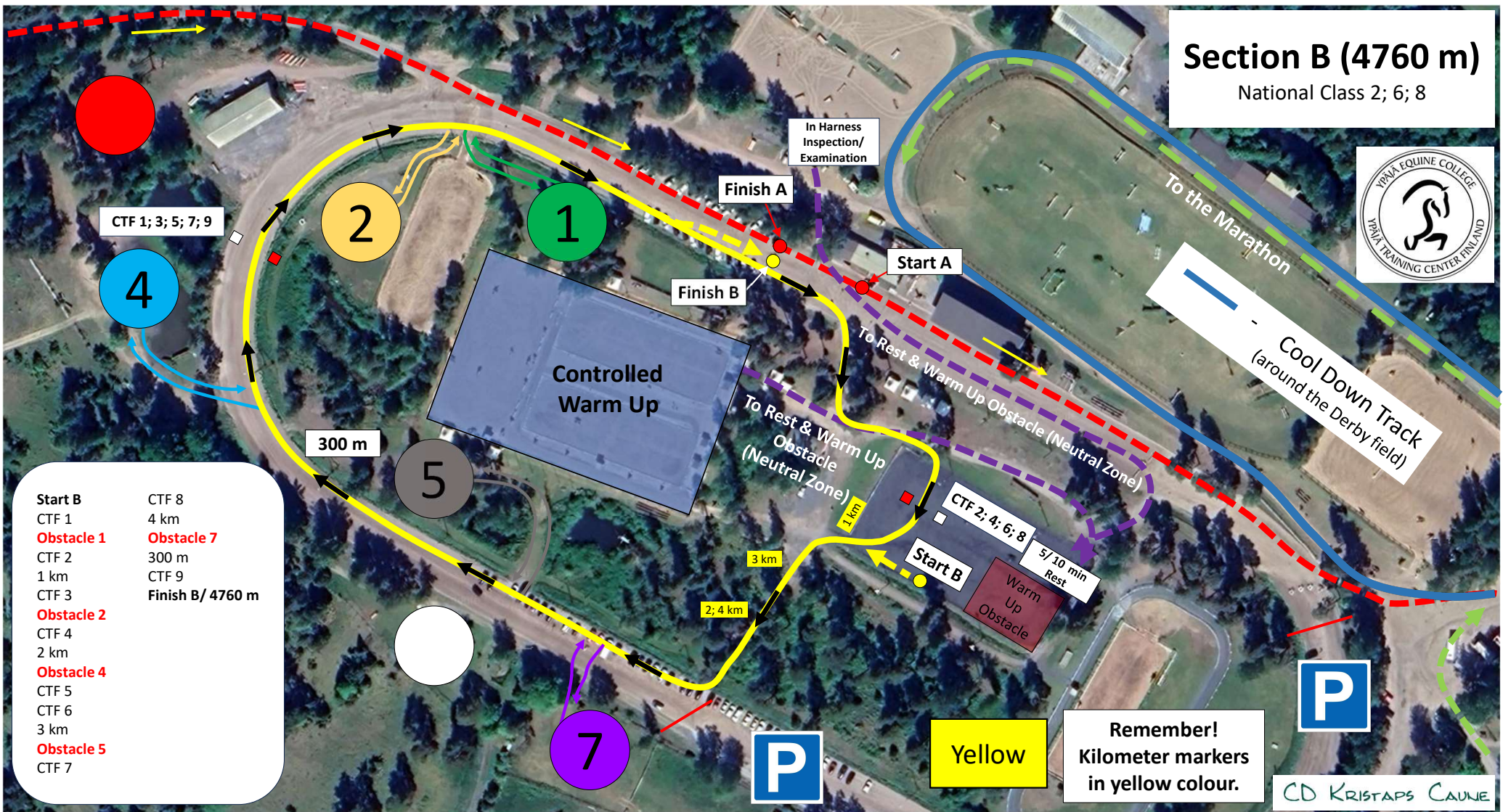
National Class 2

Controlled Warm Up

CD KRISTAPS CAUNE

Section B (4760 m)

National Class 2; 6; 8



- | | |
|-------------------|-------------------------|
| Start B | CTF 8 |
| CTF 1 | 4 km |
| Obstacle 1 | Obstacle 7 |
| CTF 2 | 300 m |
| CTF 3 | CTF 9 |
| Obstacle 2 | Finish B/ 4760 m |
| CTF 4 | |
| Obstacle 4 | |
| CTF 5 | |
| CTF 6 | |
| 3 km | |
| Obstacle 5 | |
| CTF 7 | |

Yellow

Remember!
Kilometer markers
in yellow colour.

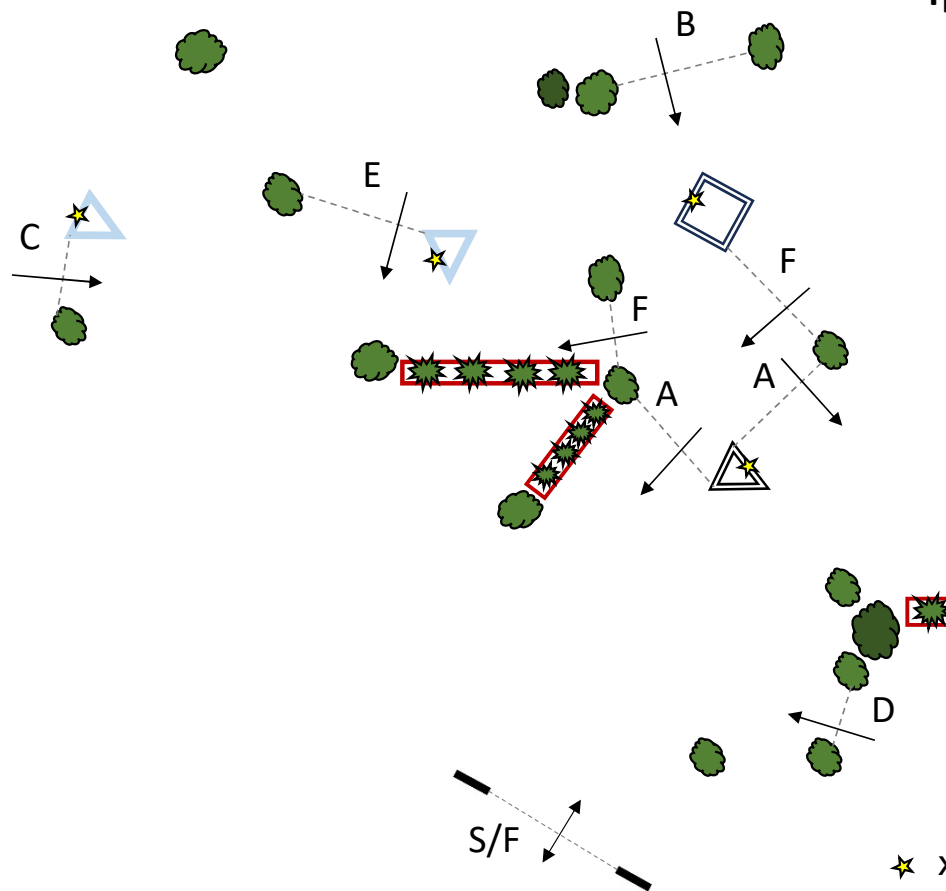
CD KRISTAPS CAUNE

National Class 2; 6; 8 Gates – A-E

Ypäjän Osuuspankki



1

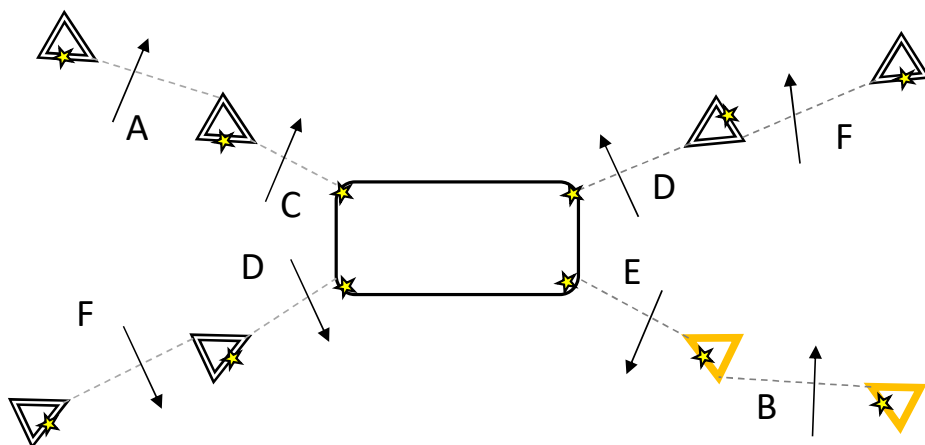
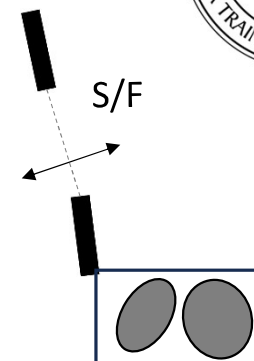
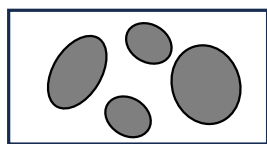


CD KRISTAPS CAUNE

National Class 2; 6; 8 Gates – A-E

Equine College

2



★ x 12 - dislodgeable elements

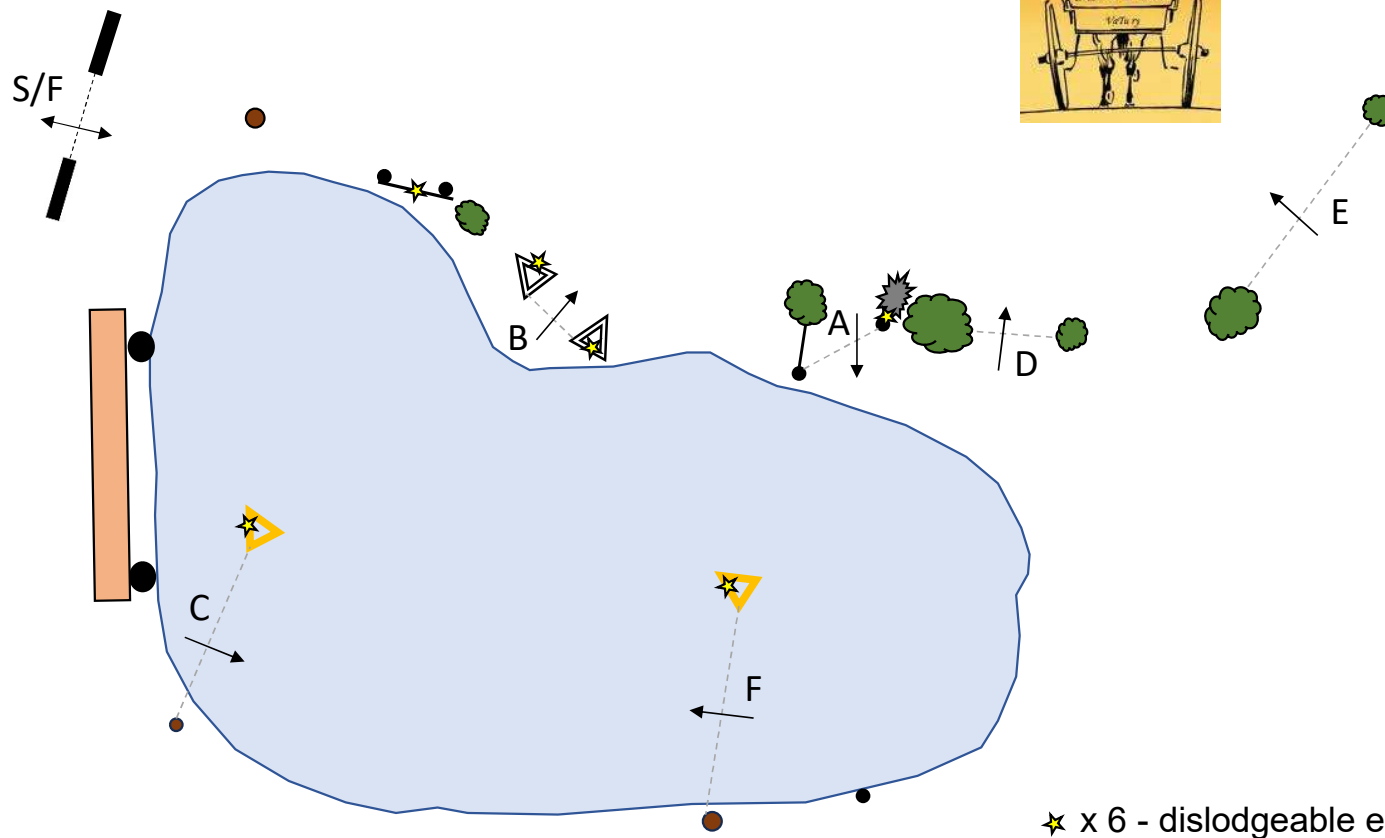
CD KRISTAPS CAUNE

National Class 2; 6; 8 Gates – A-E



VaTu ry

4

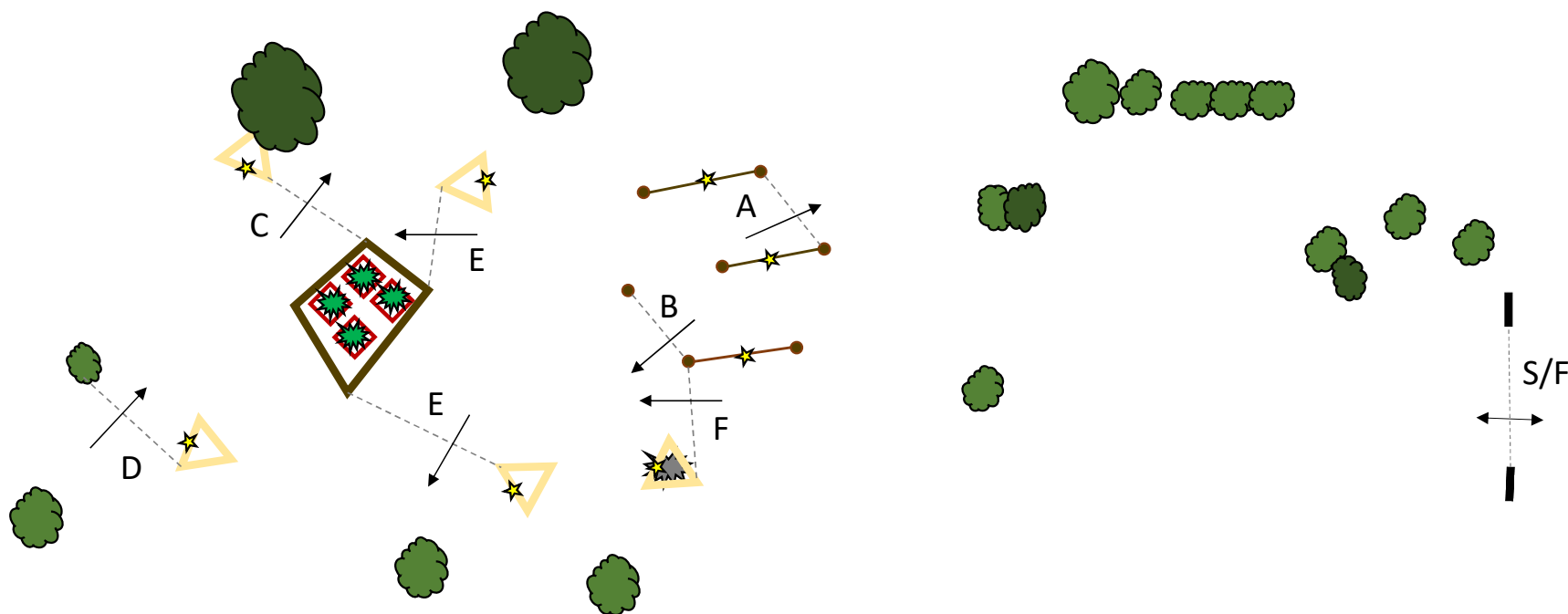


★ x 6 - dislodgable elements

CD KRISTAPS CAUNE

National Class 2; 6; 8 Gates – A-E

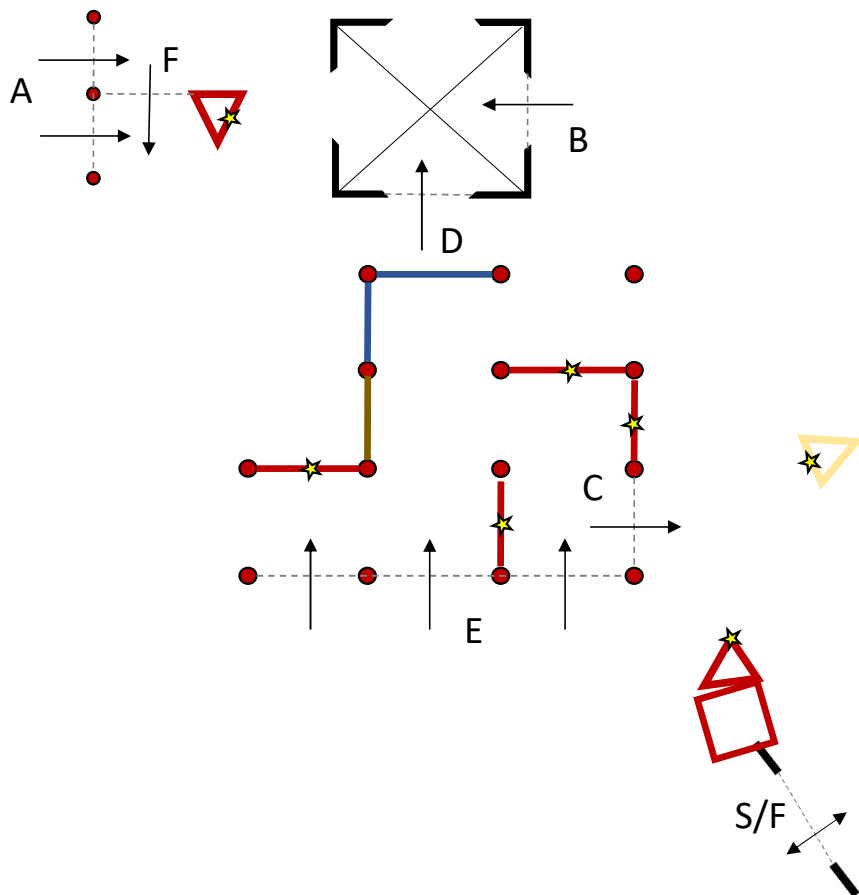
Equestrian Sport Museum



★ x 8 - dislodgeable elements

CD KRISTAPS CAUNE

National Class 2; 6; 8 Gates – A-E



★ x 7 - dislodgable elements